

TRIPE 2 WAY

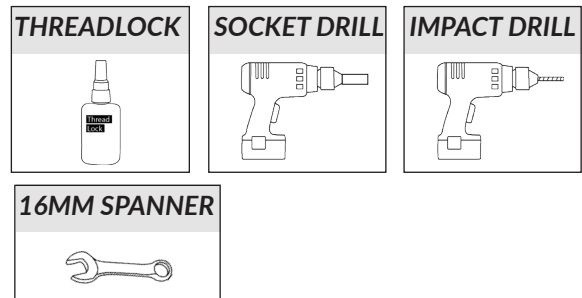
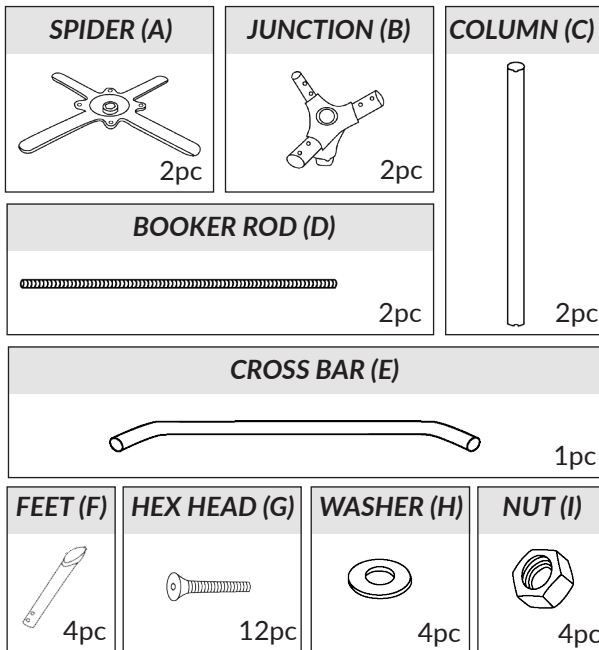
Table Bases



scan me

PARTS:

TOOLS (NOT INCLUDED):



We strongly recommend applying thread lock to ends of the booker rod and using an 17mm socket drill. Scan the QR code with a phone or tablet to access the assembly video.

WARNING:

Always take care with a socket drill.

INSTRUCTIONS:

